



RANGE HOOD

PRODUCT CATALOG





Table of Contents

RANGE HOOD SELECTION GUIDE

Selecting Your Range Hood Page 3

ASHRAE 62.2 Solutions

Total Home Solutions Page 4

LINERS AND POWER PACKS

LIN Series Pages 5 - 6

LE Series Pages 7 - 8

CONTINUOUS OPERATION RANGE HOODS

Why Use A Continuous Operation Range Hood Page 9

ENERGY STAR® CERTIFIED RANGE HOODS

ECQ Series Pages 10 - 11

ESQZ Series Pages 12 - 13

ESZADA Series (ADA compliant) Page 14

UNDER CABINET RANGE HOODS

AV Series Pages 15 - 16

RANGE HOOD FILTERS

Grease / Odor / Combination Filters Page 17

RANGE HOOD ACCESSORIES

Range Hood Backsplashes Page 18

Roof Caps Page 18

Wall Caps Page 18

Dampers Page 18

SPECIFICATIONS

Range Hood Specifications Page 19





Hood Selection

Air King offers a wide array of range hood solutions including ENERGY STAR® certified options. Selecting the perfect Air King range hood for your requirements can be done through the following considerations:

Ducted Versus Ductless

A ducted range hood takes the exhaust air and pushes it outside through either a wall or roof vent. A ductless range hood pushes the air through an internal grease and odor filter, then recirculates the air back into the room. Many hoods are listed as convertible meaning that they can be configured to operate ducted or ductless. To maximize the performance of your range hood it is recommended that it be ducted to the outside to ensure proper ventilation. Ducted range hoods are required for ENERGY STAR certification as well as ASHRAE 62.2 requirements and provide the best solution. In situations where these requirements are not mandatory and ducting is not possible, a ductless range hood can be used.

Where is the Ducting

Range hood will vent vertically or horizontally. Most under cabinet ranges hood utilize a 3.25" x 10" duct connection which is standard on most hoods. Some hood utilize a round vertical adapter. If you are using existing ducting, make sure the hood you choose either comes with the ducting you need or can be converted to it.

Determine Your CFM

CFM (Cubic Feet Per Minute) is the amount of air the range hood is exhausting. HVI (Home Ventilation Institute) recommends 1 CFM per 100 BTU's. So for instance a 10,000 BTU range would require a 100 CFM range hood.

Choose The Sound Level (Sones)

The next consideration is the sound level which is measured in Sones. The lower the sone, the quieter the range hood. A range hood with an operating speed around one sone is considered extremely quiet. When targeting a sound level, keep in mind that range hoods have multiple speeds. While the top speed will be higher in sound, for most cooking applications, the low speed or if present medium speed will be sufficient for your ventilation needs.

Special Consideration

Before selecting any range hood, you should consult all national and local codes such as ASHRAE 62.2 and California Title 24, to determine if any specialized requirements exist.



ASHRAE 62.2 Total Home Solutions

Solving for ASHRAE 62.2 ventilation standards can be confusing. This guide is designed to help you choose the best solution for your specific installation. The information provided is to be used as a guide. All local codes need to be adhered to.

Air King offers multiple solutions to:

- Meet the budget of the project.
- Provide the proper ventilation for the size of the home.
- Meet specifications and codes concerning energy usage and sound.
- Allow for interchangeable models if more or less ventilation is needed.

Depending on the home and the location, the ASHRAE 62.2 requirements can be complied with in multiple ways. The following charts provide various solutions depending on where you want to place the continuous - whole house exhaust fan. The chart is for homes under 4,200 square feet with up to 4 bedrooms and 2.5 baths. For larger homes, contact your sales representative.



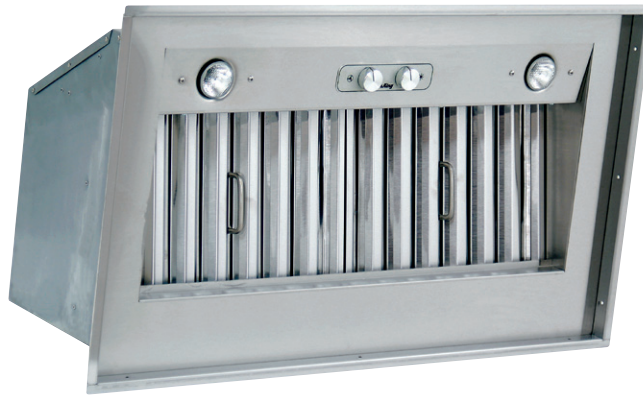


LIN Series

RANGE HOOD LINERS

Air King Professional series indoor/outdoor liners provide the power for your custom range hood canopy and can be mounted indoors or outdoors in a covered area. Liners are available in multiple widths and CFM levels and feature a professional grade 304 gauge stainless steel fascia and baffle filters.





LIN Series

- Approved for indoor use as well as for covered outdoor kitchens.
- Professional grade, stainless steel, dishwasher safe baffles capture grease and debris from the cooking surface and are easily removed using the integrated handle for cleaning.
- **Included** dimmable 7 watt LED lamps illuminate the cooking surface.
- Quad inlet twin blower with three speed motor control provides powerful ventilation with quiet operation.
- **Included**, vertical round outlet adapter, sized specific for the included motor (600 CFM: 8" round, 900 CFM: 8" round, 1200 CFM: 10" round).
- Professional grade 304 gauge stainless steel fascia with integrated liner.

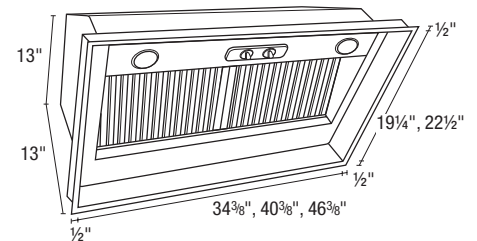
Ask your representative about additional special order sizes and configurations.



INCLUDED

PGB-03 Stainless Steel Baffle Filters

DIMENSIONS



MODEL	FITS CABINETS	CUTOUT OPENING	AIRFLOW (CFM)	SOUND (SONES)	OUTDOOR USE*	DUCT SIZE	FASCIA FINISH	LIGHTING	LISTING
LIN34m-600	36"W x 20"D	34 ³ / ₈ "W x 19 ¹ / ₄ "D	600/500/300	5.5/4.5/1.5	YES	8" round	Stainless Steel	2 - 7W LED	ETL
LIN34m-900	36"W x 20"D	34 ³ / ₈ "W x 19 ¹ / ₄ "D	900/600/400	11.0/5.5/2.0	YES	8" round	Stainless Steel	2 - 7W LED	ETL
LIN34md-600	36"W x 24"D	34 ³ / ₈ "W x 22 ¹ / ₂ "D	600/500/300	5.5/4.5/1.5	YES	8" round	Stainless Steel	2 - 7W LED	ETL
LIN34md-900	36"W x 24"D	34 ³ / ₈ "W x 22 ¹ / ₂ "D	900/600/400	11.0/5.5/2.0	YES	8" round	Stainless Steel	2 - 7W LED	ETL
LIN46md-900	48"W x 24"D	46 ³ / ₈ "W x 22 ¹ / ₂ "D	900/600/400	11.0/5.5/2.0	YES	8" round	Stainless Steel	2 - 7W LED	ETL
LIN46md-1200	48"W x 24"D	46 ³ / ₈ "W x 22 ¹ / ₂ "D	1200/900/400	15.0/11.0/2.0	YES	10" round	Stainless Steel	2 - 7W LED	ETL





LE Series

RANGE HOOD POWER PACKS

Air King ENERGY STAR® certified power packs mount into custom canopies or flush to the bottom of cabinets, providing style and power to your kitchen ventilation needs.





LEA Series

- **ENERGY STAR® Certified.**
- Round duct adapter with back draft damper included.
- **Included** dual LED lamps.

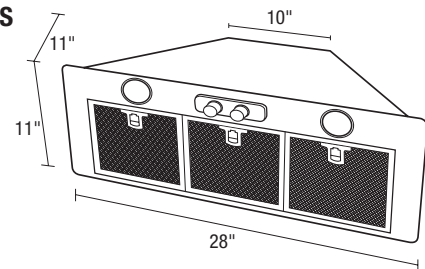
Continuous Operation Range Hood

- **Two with One:** Solve for kitchen ventilation AND ASHRAE 62.2 continuous ventilation with one range hood instead of multiple fans.
- **Limit the Particulates:** The kitchen is typically the largest contributor to particulates, especially fine particulates. Using the range hood to solve for continuous ventilation places the ventilation at the most effective location to ventilate these particulates.
- **Location:** The kitchen is generally located in a central part of the home, so it only makes sense to locate the continuous ventilation there.
- **Quiet, energy efficient operation.**
- Solutions for ASHRAE 62.2 continuous whole house ventilation without needing to install additional exhaust fans.
- **Adjustable Capacity Motor:** 4 capacity settings on low speed allow the fan to be set to the required exhaust rate for continuous ventilation. Low speed set points include: 30, 50, 70, or 90 CFM with a sound level of **<0.3 Sones**. High speed clears the air of moisture, odors or other contaminants directly above one of the main sources of indoor air contaminates.



INCLUDED
SVGF-03 Mesh Grease Filter

DIMENSIONS



MODEL	FITS CABINETS	CUTOUT OPENING	AIRFLOW (CFM)	SOUND (SONES)	ENERGY STAR	INCLUDED DUCT SIZE	FASCIA FINISH	LIGHTING	LISTING
LE300A	30" or larger	27"W x 10"D	300/200/150	5.0/2.0/0.5	YES	6" round	Stainless Steel	2 - 7W LED	ETL



www.airkinglimited.com





Continuous Operation Range Hoods

WHY IT WORKS

Total Home Ventilation by Air King combines multiple ventilation products into one cohesive operating system. **It starts with placing the ventilation at the sources of the largest contaminate - the kitchen.** Locating the continuous ventilation in the kitchen allows the main ventilation of the dwelling to occur where it is needed the most. It also solves for both continuous and local kitchen exhaust. Adding exhaust fans in the bathrooms allows those rooms to be effectively ventilated at the source without being shut off from the rest of the dwelling. The final piece of the puzzle is the outdoor air. Adding a Fresh Air Machine (QFAM series) ensures a flow of fresh air into the dwelling, replacing stale and contaminated air that is being exhausted out of the dwelling.



Learn more about Air King Exhaust Fans and Fresh Air Solutions at www.airkinglimited.com





ECQ Series

UNDER CABINET RANGE HOODS

The Air King ENERGY STAR® certified under cabinet deluxe quiet range hoods provide an effective and energy efficient kitchen ventilation solution. The deluxe quiet range hoods are available in multiple finishes and widths.





ECQ Series

- **ENERGY STAR® Certified.**

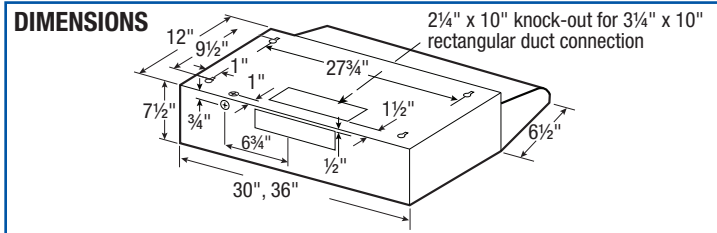
- Horizontally or vertically ducting with the included 3¼" x 10" duct collar (ducting available separately).
- **Included** LED lamp.

Continuous Operation Range Hood

- **Two with One:** Solve for kitchen ventilation AND ASHRAE 62.2 continuous ventilation with one range hood instead of multiple fans.
- **Limit the Particulates:** The kitchen is typically the largest contributor to particulates, especially fine particulates. Using the range hood to solve for continuous ventilation places the ventilation at the most effective location to ventilate these particulates.
- **Location:** The kitchen is generally located in a central part of the home, so it only makes sense to locate the continuous ventilation there.
- **Quiet, energy efficient operation.**
- Solutions for ASHRAE 62.2 continuous whole house ventilation without needing to install additional exhaust fans.
- **Adjustable Capacity Motor:** 4 capacity settings on low speed allow the fan to be set to the required exhaust rate for continuous ventilation. Low speed set points include: 30, 50, 70, or 90 CFM with a sound level of **<0.3 Sones**. High speed clears the air of moisture, odors or other contaminants directly above one of the main sources of indoor air contaminants.



INCLUDED
GF-01S Mesh Grease Filters
 (24" models - GF-07S)



MODEL	WIDTH	FINISH	AIRFLOW (CFM)	SOUND (SONES)	ENERGY STAR	INCLUDED DUCT SIZE	DUCTING OPTIONS	LIGHTING	LISTING
ECQ308	30"	Stainless Steel	Horizontal 270 / 180	Horizontal 4.5 / 1.5	YES	3¼" x 10"	Horizontal Vertical Ductless	8W LED	ETL
ECQ368	36"								
ECQ243	24"	White	Vertical 270 / 180	Vertical 5.0 / 1.5					
ECQ303	30"								
ECQ363	36"								
ECQ306	30"	Black	Continuous 30, 50, 70, 90	Continuous <0.3					





ESQZ Series

UNDER CABINET RANGE HOODS

The Air King Quiet Zone Range Hoods provide a lower profile, energy efficient and effective solution to your kitchen ventilation needs. ENERGY STAR® certified (ESQZ) as well as ADA compliant (ESZ) models available. Offered multiple finishes and widths.



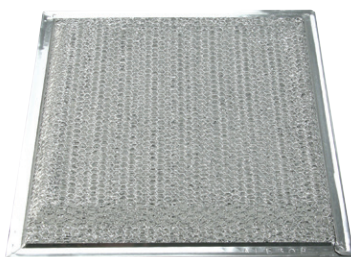


ESQZ Series

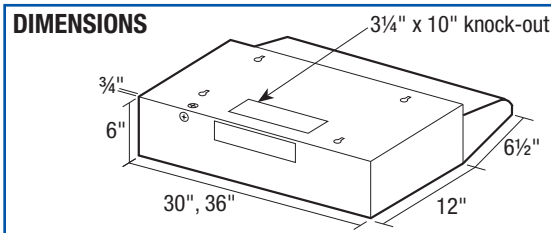
- **ENERGY STAR® Certified.**
- Powerful two speed motor.
- Included, easily removable aluminum grease filter captures grease and debris.
- **Included** LED lamp.
- **Ducting options:** Horizontally or vertically with the included duct collar and back draft damper for 3¼" x 10" (ducting not included).

Convertible to ductless operation with the addition of model CF-08 charcoal odor filter (available separately).

The ENERGY STAR Program for Residential Ventilating Fans has no provision for qualification of ductless range hoods (recirculating not ventilating), as a result the ENERGY STAR program applies to ducted range hoods only.

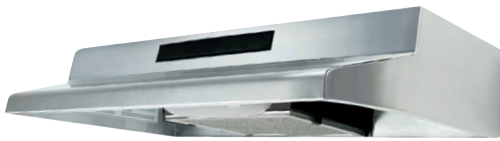


INCLUDED
GF-08 Aluminum Grease Filter



MODEL	WIDTH	FINISH	AIRFLOW (CFM)	SOUND (SONES)	ENERGY STAR	INCLUDED DUCT SIZE	DUCTING OPTIONS	LIGHTING	LISTING
ESQZ2308	30"	Stainless Steel	Horizontal 250 / 100 Vertical 220 / 120	Horizontal 6.0 / 1.5	YES	3¼" x 10"	Horizontal Vertical Ductless	6W LED	ETL
ESQZ2303	30"	White		Vertical 6.5 / 1.5					
ESQZ2306	30"	Black							



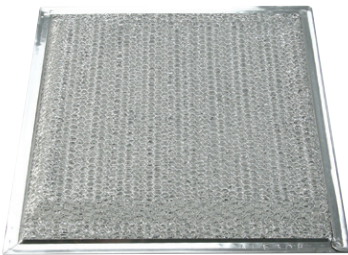


ESZADA Series

- **ENERGY STAR® Certified.**
- **AMERICANS WITH DISABILITIES ACT (ADA) Compliant.**
- Included dual rocker, white control switch mounts to the wall at an accessible height. Fits a triple gang box.
- Powerful two speed motor.
- Included, easily removable aluminum grease filter captures grease and debris.
- **Included LED lamp.**
- **Ducting options:** Horizontally or vertically with the included duct collar and back draft damper for 3¼" x 10" (ducting not included).



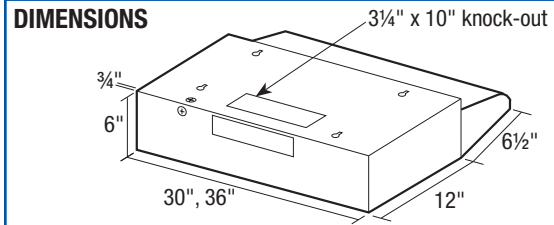
INCLUDED Wall Control



INCLUDED GF-08 Aluminum Grease Filter

Convertible to ductless operation with the addition of model CF-08 charcoal odor filter (available separately).

The ENERGY STAR Program for Residential Ventilating Fans has no provision for qualification of ductless range hoods (recirculating not ventilating), as a result the ENERGY STAR program applies to ducted range hoods only.



MODEL	WIDTH	FINISH	AIRFLOW (CFM)	SOUND (SONES)	ENERGY STAR	INCLUDED DUCT SIZE	DUCTING OPTIONS	LIGHTING	LISTING
ESZ308ADA	30"	Stainless Steel	Horizontal 250 / 100	Horizontal 6.0 / 1.5	YES	3¼" x 10"	Horizontal Vertical Ductless	6W LED	ETL
ESZ368ADA	36"								
ESZ303ADA	30"	White	Vertical 220 / 120	Vertical 6.5 / 1.5					
ESZ363ADA	36"								
ESZ306ADA	30"	Black							





AV Series

UNDER CABINET RANGE HOODS

The Air King AV series under cabinet range hoods provide an economical solution to your kitchen ventilation needs. Available in multiple finishes and widths.



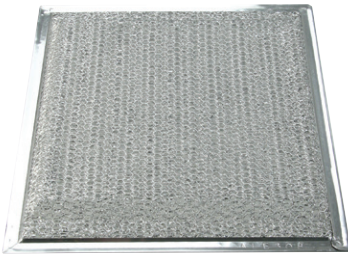


AV Series

- Two speed motor control.
- Included, easily removable aluminum grease filter captures grease and debris.
- Utilizes up to a 60 watt type A19 lamp (not included).
- **Ducting options:** Horizontally or vertically with the included duct collar and back draft damper for 3/4" x 10" (ducting not included).

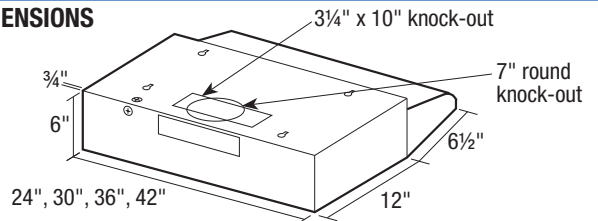
Convertible to 7" round vertical ducting with the addition of model ARD7R duct collar and damper (available separately).

Convertible to ductless operation with the addition of model RF34S charcoal odor filter (available separately).

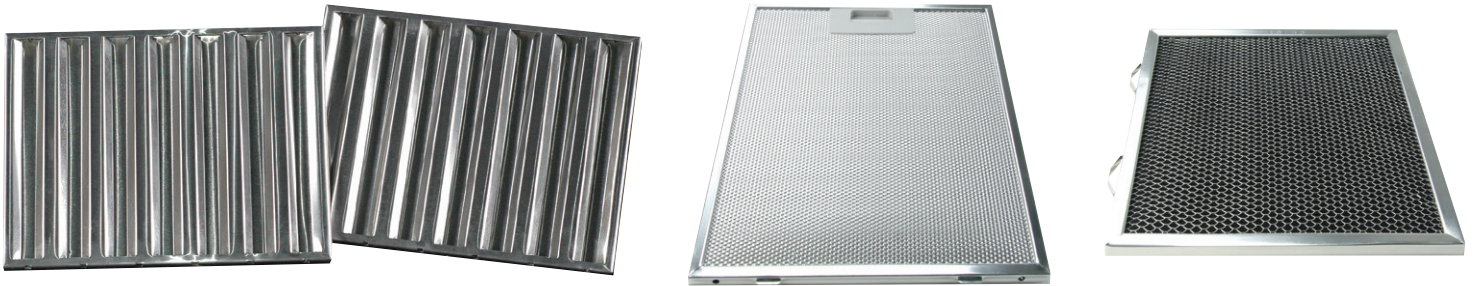


INCLUDED
RF35S Aluminum Grease Filter

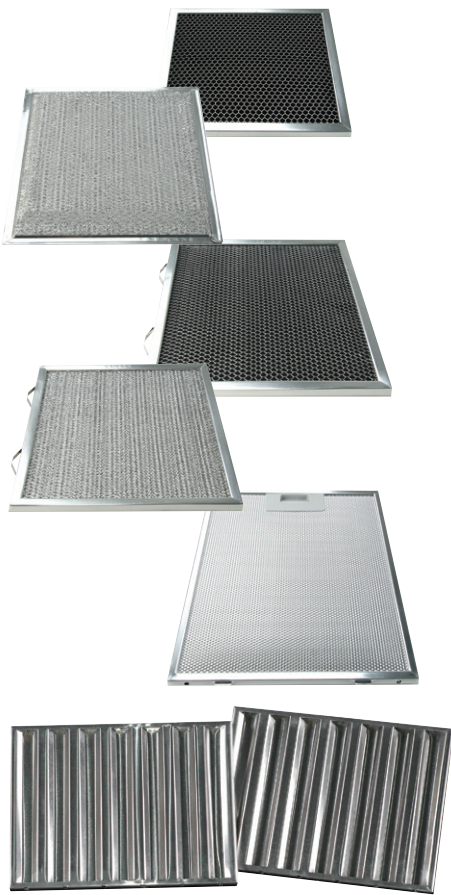
DIMENSIONS



MODEL	WIDTH	FINISH	AIRFLOW (CFM)	SOUND (SONES)	ENERGY STAR	INCLUDED DUCT SIZE	DUCTING OPTIONS	LIGHTING	LISTING
AV1248	24"	Stainless Steel	Vertical 180	Vertical 7.5	NO	3/4" x 10"	Horizontal Vertical Ductless	Up to a 60W lamp (Lamp not included)	ETL
AV1308	30"								
AV1368	36"								
AV1428	42"								
AV1243	24"	White							
AV1303	30"								
AV1363	36"								
AV1423	42"								
AV1246	24"	Black	Horizontal 180	Horizontal 7.0					
AV1306	30"								
AV1366	36"								



RANGE HOOD FILTERS

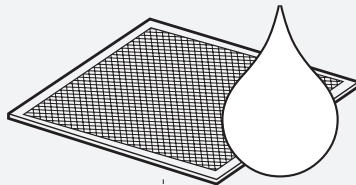


MODEL	DESCRIPTION	USE WITH
RF34S	Charcoal Odor Filter	AV Series (when used ductless)
RF35S	Grease Filter	AV Series
RF55S	Combination Grease/Charcoal Odor Filter	AV Series (when used ductless)
GF-01S	Grease Filter	ECQ Series
GF-07S	Grease Filter	ECQ24 Series
CF-08	Charcoal Odor Filter	ESQZ, ESZADA Series
GF-08	Grease Filter	ESQZ, ESZADA Series
PBG-03	Grease Baffle	LIN Series
SVGF-03	Grease Filter	LE Series

MAINTENANCE

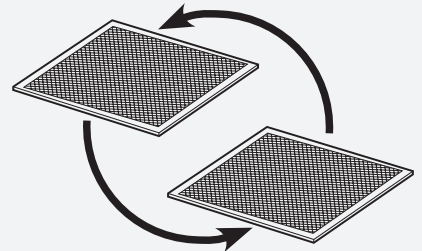
CLEAN

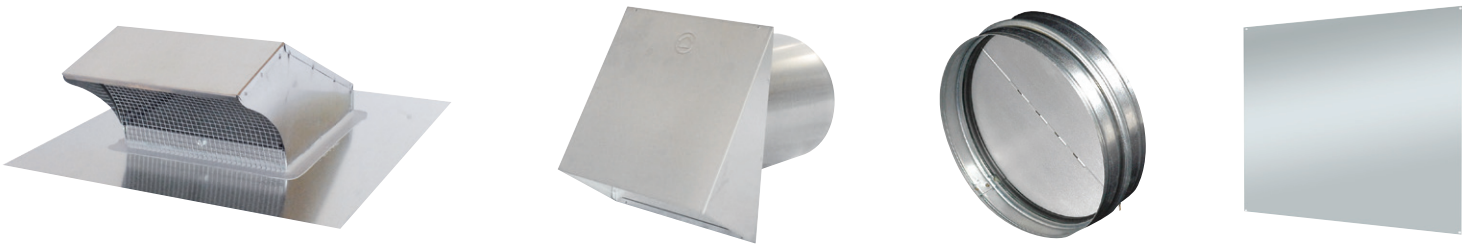
Grease filters at least once a month or more depending on usage



REPLACE

Charcoal Odor Filters: at least once per year or more depending on usage
Grease Filters: when they become damaged

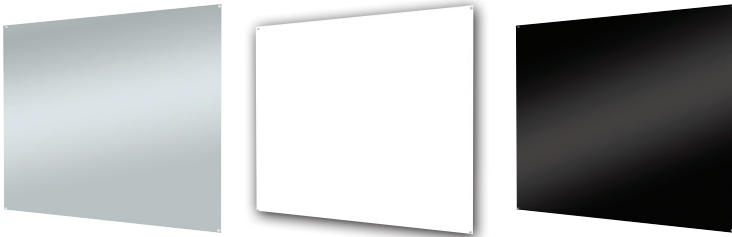




HOOD ACCESSORIES

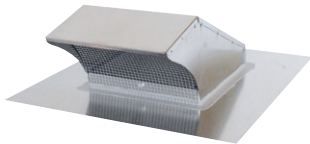
UNDER CABINET BACK SPLASHES

Protect the wall behind your cooking surface with an Air King back splash, designed to match both the finish and size of your range hood.



WIDTH	HEIGHT	WHITE	BLACK	STAINLESS STEEL
24"	24"	SP2424W	SP2424B	SP2424S
30"	24"	SP2430W	SP2430B	SP2430S
36"	24"	SP2436W	SP2436B	SP2436S

ROOF CAPS



The finishing touch to any system is a range hood roof cap. Properly exhaust the air out of the home using a roof cap matched to your system's needs.

PRC10R: Galvanized steel roof cap with bird screen and damper, accepts 10" round ducting

PRC8R: Galvanized steel roof cap with bird screen and damper, accepts 8" round ducting

PRC6R: Galvanized steel roof cap with bird screen and damper, accepts 6" round ducting

WALL CAPS



The finishing touch to any system is a range hood wall cap. Properly exhaust the air out of the home using a wall cap matched to your system's needs.

PWC10R: Galvanized steel wall cap with damper, accepts 10" round ducting

PWC8R: Galvanized steel wall cap with damper, accepts 8" round ducting

PWC6R: Galvanized steel wall cap with damper, accepts 6" round ducting

DAMPERS



Range hood dampers provide protect from back drafts entering back into the home. Dampers can be added to ducting from most Air King range hoods.

ARD7R: Round collar with aluminum back draft damper, 7" round ducting (for use with AV series)

BDD6R: Metal back draft damper, 6" round ducting

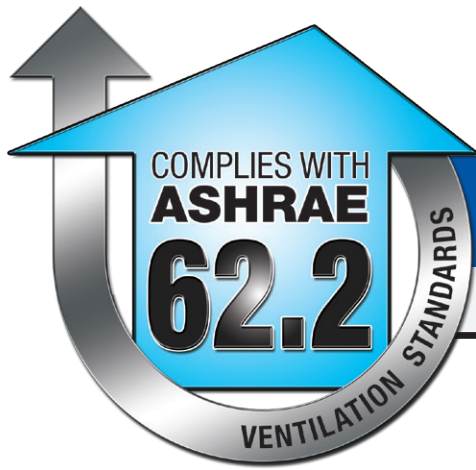
BDD8R: Metal back draft damper, 8" round ducting

SPECIFICATIONS

MODEL	WIDTH	AIRFLOW (CFM) ¹	SOUND (SONES) ¹	FINISH	LIGHTING	DUCTING OPTIONS	ADA COMPLIANT	ENERGY STAR [®] CERTIFIED	PAGE
LIN34m-600	34.375"	600	5.5	Stainless Steel	LED	8" Round	NO	NO	6
LIN34m-900	34.375"	900	11.0	Stainless Steel	LED	8" Round	NO	NO	6
LIN34md-600	34.375"	600	5.5	Stainless Steel	LED	8" Round	NO	NO	6
LIN34md-900	34.375"	900	11.0	Stainless Steel	LED	8" Round	NO	NO	6
LIN46md-900	46.375"	900	11.0	Stainless Steel	LED	8" Round	NO	NO	6
LIN46md-1200	46.375"	1200	15.0	Stainless Steel	LED	10" Round	NO	NO	6
LE300A	28"	300	4.5	Stainless Steel	LED	6" Round	NO	YES	8
ECQ308	30"	270	5.0	Stainless Steel	LED	3.25" x 10"	NO	YES	11
ECQ368	36"	270	5.0	Stainless Steel	LED	3.25" x 10"	NO	YES	11
ECQ243	24"	270	5.0	White	LED	3.25" x 10"	NO	YES	11
ECQ303	30"	270	5.0	White	LED	3.25" x 10"	NO	YES	11
ECQ363	36"	270	5.0	White	LED	3.25" x 10"	NO	YES	11
ECQ306	30"	270	5.0	Black	LED	3.25" x 10"	NO	YES	11
ESQZ2308	30"	220	6.5	Stainless Steel	LED	3.25" x 10"	NO	YES	13
ESQZ2303	30"	220	6.5	White	LED	3.25" x 10"	NO	YES	13
ESQZ2306	30"	220	6.5	Black	LED	3.25" x 10"	NO	YES	13
ESZ308ADA	30"	220	6.5	Stainless Steel	LED	3.25" x 10"	YES	YES	14
ESZ368ADA	36"	220	6.5	Stainless Steel	LED	3.25" x 10"	YES	YES	14
ESZ303ADA	30"	220	6.5	White	LED	3.25" x 10"	YES	YES	14
ESZ363ADA	36"	220	6.5	White	LED	3.25" x 10"	YES	YES	14
ESZ306ADA	30"	220	6.5	Black	LED	3.25" x 10"	YES	YES	14
AV1248	24"	180	7.5	Stainless Steel	Incandescent	3.25" x 10"	NO	NO	16
AV1308	30"	180	7.5	Stainless Steel	Incandescent	3.25" x 10"	NO	NO	16
AV1368	36"	180	7.5	Stainless Steel	Incandescent	3.25" x 10"	NO	NO	16
AV1428	42"	180	7.5	Stainless Steel	Incandescent	3.25" x 10"	NO	NO	16
AV1243	24"	180	7.5	White	Incandescent	3.25" x 10"	NO	NO	16
AV1303	30"	180	7.5	White	Incandescent	3.25" x 10"	NO	NO	16
AV1363	36"	180	7.5	White	Incandescent	3.25" x 10"	NO	NO	16
AV1423	42"	180	7.5	White	Incandescent	3.25" x 10"	NO	NO	16
AV1246	24"	180	7.5	Black	Incandescent	3.25" x 10"	NO	NO	16
AV1306	30"	180	7.5	Black	Incandescent	3.25" x 10"	NO	NO	16
AV1366	36"	180	7.5	Black	Incandescent	3.25" x 10"	NO	NO	16

¹ CFM/Sones on high speed with vertical discharge - see individual page for full specifications.





TOTAL HOME VENTILATION

EFFICIENT • EFFECTIVE • ECONOMICAL

Local Ventilation
D4 or E Series exhaust fan for larger sized bathrooms

Continuous Ventilation
LE300A range hood insert for continuous ventilation **PLUS** local ventilation

OUTDOOR AIR
QFAMD Fresh Air Machine brings controlled air in from the outside

Local Ventilation
BFQ Series exhaust fan for small to medium sized bathrooms

Local Ventilation
BFC Series exhaust fan for laundry rooms



10 TIME ENERGY STAR® PARTNER OF THE YEAR
2023, 2022, 2021, 2020, 2019, 2014 Partner of the Year - Sustained Excellence
2018, 2017, 2013 and 2012 Partner of the Year, 2014 Climate Communications

